

Checklist

CUSTOMISED KITCHEN PLANNING



Everyone is unique – as is the kitchen in which you live, cook and make new memories. Personal requirements and individual tastes combine to create a totally unique kitchen. With our kitchen checklist you can think about the most important things before consulting your specialist retailer and then use the list as a guide as you discuss the options. We'll help you to find your dream kitchen!

schüller.

Rooms

Where do you live?

in a house
new build

in a flat
old building

in rented property

Freehold

What floor do you live on?

What type of energy is available?

Electricity

Gas

How do you get your hot water?

through the communal heating system

separately from a tankless boiler

How do you see your kitchen?

in a separate room

in an open room with a living and dining area

How big is your kitchen?

m² Floor area

m Length

m Width

m Height

Are structural changes possible and required?

yes

no

What are the walls like? *

Brick wall

Concrete wall

Drywall / plasterboard

single layer cladding

double layer cladding

* Depending on your required kitchen design, please discuss details regarding the walls with your retailer.

What materials and colours are used?

on your floors

on the walls

Are there any heaters?

yes

no, not yet

no, we have underfloor heating

Are there any special building features?

Design

What shape should your kitchen be and what would you use an island for?

Galley kitchen



Double galley kitchen



with kitchen island



for preparation

for washing up

for cooking

for eating

L-shaped



U-shaped



L-shaped with island



What front would you like?

Laminate uni

Laminate wooden decor

high gloss

matt

Laminate stone-, steel- or other decor

Laquer

Wood / veneer

Glass

What material should your worktop be made of?

Laminate uni

Laminate wooden decor

Laminate stone decor

Glass

Laminate steel decor

Quartz

Ceramic

Solid wood

SensiQ

Stone / granite

What colours do you like? Have you already got a particular decor in mind?

What handles would you like?

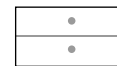
Standard handles



Bar handles



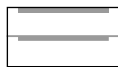
Knobs



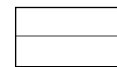
Grip ledges



Grip ledges



handleless / with TIP-ON



How should your recess be set up?

Backsplash

Glass matt uni

Glass gloss uni

Motif print on melamine

Motif print on glass

made of worktop material

with panel system

What should your kitchen look like?

mainly closed cupboards

mainly open with shelving

Materials and surfaces, forms and colours make your kitchen individual. Here, we invite you to find inspiration on fronts, worktops, handles and recess claddings. Or you can just test the combination of different elements by using our **kitchen configurator**.



Organisation

What storage space do you have besides the kitchen?

Larder / store cupboard

Storeroom / cellar

Utility room

How much storage space do you need for the following items?

| | | |
|---|----------|-------|
| Food | sparsely | a lot |
| Glasses and crockery | sparsely | a lot |
| Besteck, Küchenutensilien und Arbeitshelfer | sparsely | a lot |
| Cutlery, kitchen utensils and accessories | sparsely | a lot |
| Pans, frying pans and cookware | sparsely | a lot |
| Small kitchen appliances | sparsely | a lot |
| Cleaning products and dishwashing utensils | sparsely | a lot |

What else would you like to store in the kitchen?

What material should the interior fittings of your kitchen be made of?

Wood

Laminate



Do you require any special storage systems?

Flex-Boxes of real wood

LE MANS corner base unit or corner base unit with C-Slide

Corner lifter with retractable pull-out shelves

Wall unit with electrical opening system

Wall unit with C-SLIDE

Base unit for waste sorting and recycling (optionally with electrical opening system)

Tall unit with internal pull-outs, pull-out larder unit or tiered pull-out larder unit

Tall unit for bottle crates

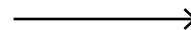
Top unit with roller-shutter

Pull-out shelf

OrgaWall

Other requirements:

The outer appearance of the kitchen places special demands on its interior. Modern and innovative solutions mean that you can keep it tidy and well organised.



Appliances

Should existing appliances be used?

yes, the following:

no

Would you like to use a smart home system?

yes

no

What kind of hob would you like?

Induction

Glass ceramic

Gas

ergonomically lowered

in the corner

island solution

Other requirements:

What kind of extractor would you like?

Exhaust air

Recirculated air

Ceiling hood

Chimney hood

Island hood

Downdraft extractor

Other requirements:

What kind of oven would you like?

raised built-in

built-under appliance

Other requirements:

What kind of dishwasher would you like?

raised built-in

built-under appliance

semi-integrated

fully-integrated

Other requirements:

What kind of fridge would you like?

integrated

freestanding

Fridge freezer

Other requirements:

What kind of sink and tap would you like?

Built-in / inset sink

Flushmount sink

Undermount sink

Stainless steel

Ceramic

Composite material

Enamel

Single-lever mixer tap

Dual-lever mixer tap

Pull-out spray mixere

Other requirements:

What other appliances would you like?

Steamer

Microwave

Coffee machine

Radio / TV

Other requirements:

Details

What lighting would you like?

Task lighting (LED)

Ambient lighting

Ceiling lighting

Plinth lighting

Interior cupboard lighting

Lighting shelves

Other requirements:

Would you like to equip your kitchen or dining room with more homely elements?

Side table

Sideboard

open shelving

Table and bench

Glass display unit

Tall wardrobe unit

How many people should the dining area be set up for?

How should the dining area be set up?

separate dining table

Breakfast bar

Adjoining table

What is your budget for the kitchen?

up to € 5,000

up to € 10,000 – 15,000

up to € 20,000

up to € 30,000

up to € 40,000

I don't want to set a fixed budget

When is installation planned for?

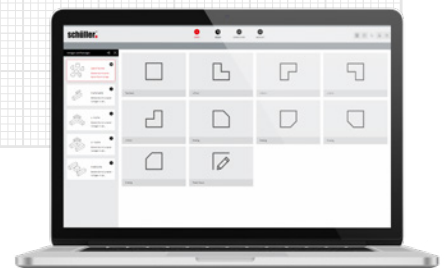
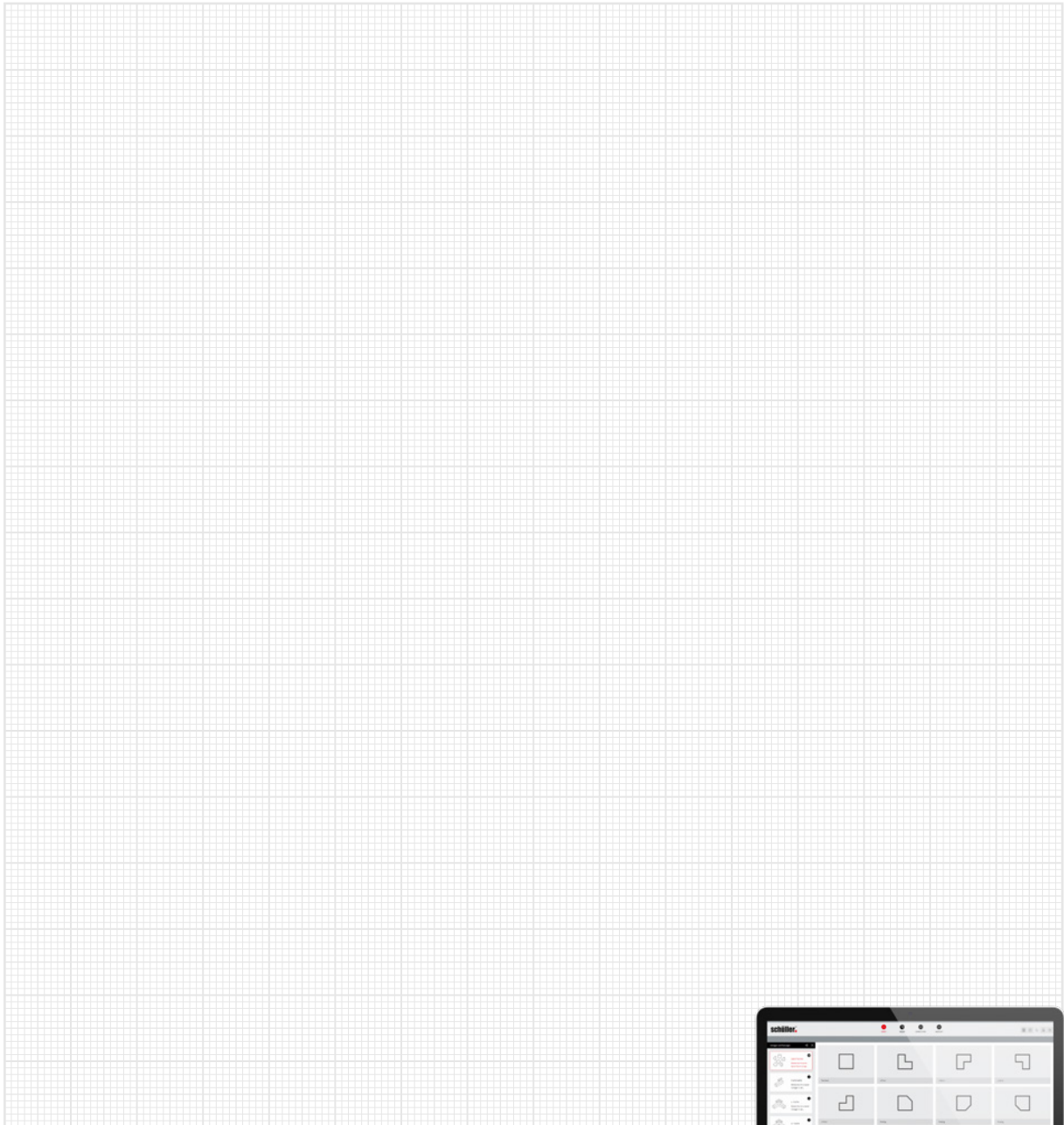
What else would you like to discuss with your specialist dealer?

Have you filled out your checklist and are now looking for advice? Find a specialist retailer near you here!



Rooms

To obtain the most precise planning proposal possible you can draw the layout of your kitchen area here and include the positions of doors, windows and connections such as electricity, gas and water.



Or you can use our online kitchen planner in an easy and comfortable way:
kuechenplaner.schuller.de/?l=en

schüller.